



© Janelle Jaqueline Photography

# THE WILSON HOUSE

*Events Guide*

# Welcome

to the PRESIDENT  
WOODROW WILSON  
HOUSE



A historic landmark and a site of the National Trust for Historic Preservation, nestled in D.C.'s elegant Kalorama neighborhood.



On March 4, 1921, Woodrow and Edith Wilson moved out of the White House and into their new home – just a mile and a half away – at 2340 S Street, N.W. Completed in 1915, the Wilson's new, very modern home and stately gardens were designed in the Georgian Revival style by renowned architect Waddy Butler Wood, combining classic design with modern necessities.

The former president lived at S Street house until his death in 1924. Edith called the mansion home until her passing in 1961, at which time she bequeathed the house and its furnishings to the National Trust for Historic Preservation to serve as a monument to President Wilson.

The S Street house has been maintained much as it was in 1924, including furniture, art, photographs, state gifts, and the personal effects of President and Mrs. Wilson.

Since 1963, the National Trust has opened the doors of the Woodrow Wilson House to the public, examining the impact of his consequential presidency and, more recently, taking an honest appraisal of Wilson's triumphs and shortcomings.

Today, we are proud to steward this site as a vibrant community resource and a model of preservation and historical collections. We offer tours, programs, special events, rentals of the venue, exhibitions and educational programming.

*Historic Perspectives. Modern Initiatives.*



# Classic Spaces

UNFORGETTABLE EVENTS

## Distinctive Rooms, Endless Charm, and Unique Experiences with each event.

The timeless home of our 28th President, perfectly preserved from the 1920s, serves as an unforgettable backdrop for your event. Marvelous architectural details and over 8,000 one-of-a-kind historic artifacts create a distinctive charm throughout the interior of the house, while the sprawling garden space serves as an already-beautiful canvas to customize. Multiple event spaces and packages make The Wilson House the perfect venue for any wedding, meeting, dinner reception, or party. Use of the entire property can accommodate standing receptions for up to 200 guests, and weddings for up to 120.

Your rental includes exclusive use of the rented spaces, tables and chairs, staff, and security for the event. Complimentary Wi-Fi is available for all events. Our experienced team is available to answer questions and provide recommendations to ensure a successful event for our clients. Please email [events@woodrowwilsonhouse.org](mailto:events@woodrowwilsonhouse.org) for inquiries.



---

## *the* Historic Garden & Terrace

Our largest event space, the historic Garden is complete with stunning views and various architectural features, and has three different levels, graduating in size. The Lower Garden is ideal for large, seated dinners for up to 120 guests, with dancing and cocktails in the Upper Garden. Partial or full tenting is required for events of 60 guests or more.

Our fully-restored tiled terrace, located just off the dining room, overlooks the garden with rooftop views of the city, and is ideal for cocktails, stationary hors d'oeuvres, and musicians.



---

## *the* Presidential Dining Room

Perfect for intimate dinners, lectures, and meetings, the Dining Room offers views of the Garden, and is easily accessible to other key rooms within the house.

Seat up to 36 guests, or accommodate up to 50 guests standing.

---

## *the* Drawing Room

Entertain your guests among elaborate gifts of state from around the world, a stunning floor-to-ceiling tapestry, and priceless artifacts from President Wilson's time in the White House.

The Drawing Room is perfect for theater seating of up to 55 guests for lectures and ceremonies, as well as small dinners for up to 30 guests.





© Todd A. Smith Photography

---

## *the Library*

The Library, where President Wilson spent the majority of his time, is home to an impressive collection of museum artifacts, including a Steinway concert grand piano belonging to his daughter Margaret that is available for use during your event.

Guests can admire the room as is, or furniture can be cleared to make way for an intimate seated dinner of up to 12.

---

## *the Solarium*

Boasting natural light and teeming with plants propagated from those under Edith Wilson's care, the Solarium can be used as a grand entrance to the Garden space, the perfect backdrop for an elopement, or intimate meal for up to 8 guests.



© Denis LARGERON Photography

---

## *the Dugout*

This charming seating room is aptly named after President Wilson's affinity for baseball, and features an exhibition game baseball signed by King George V during WW1 displayed on the mantle. This room is great for film shoots, and can be used as an auxiliary space for every rental.

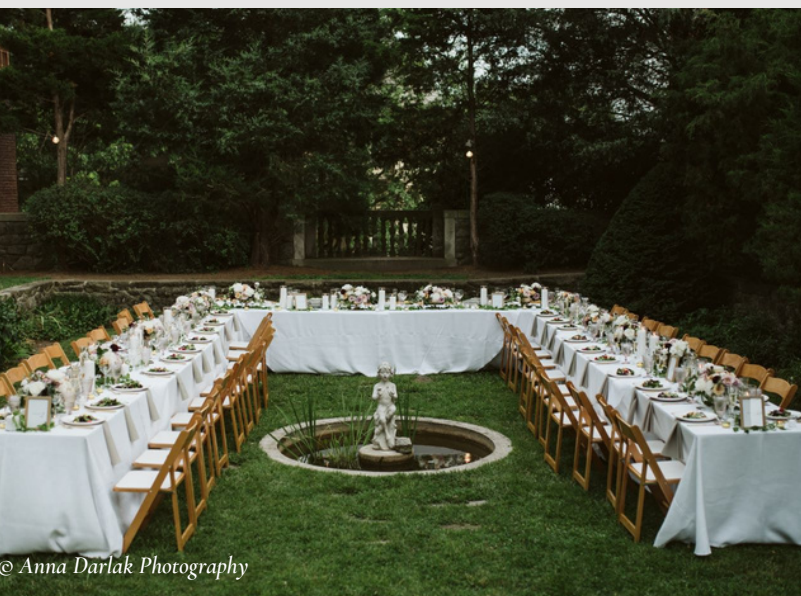




© Love Life Images



© Jessica Smith Photography



© Anna Darlak Photography



© Emily Chastain Photograph



© Love Life Images



© Jessica Smith Photography



We are pleased to recommend a collection of trusted and reputable vendors to assist in creating your event at The President Wilson House.

## AUDIOVISUAL

**Pro AV D.C.**  
202-375-0782  
www.proavdc.com

## CATERING

**Corcoran Caterers**  
301.588.9200  
www.corcorancaterers.com

**Design Cuisine**  
703.979.9400  
www.designcuisine.com

**GetPlated**  
202.480.1852  
www.getplateddc.com

**Main Event Caterers**  
703.820.2028  
www.maineventcaterers.com

**Occasions Caterers**  
202.546.7400  
www.occasionscaterers.com

**Ridgewells**  
301.652.1515  
www.ridgewells.com

**RSVP Catering**  
571.722.1249  
www.rsvpcatering.com

## CATERING (cont.)

**Spilled Milk Catering**  
202.525.6455  
www.spilledmilkcatering.com

**Susan Gage Caterers**  
301.839.6900  
www.susangage.com

**Well Dunn**  
202.543.7878  
www.welldunn.com

**Windows Catering**  
703.519.3500  
www.catering.com

## DECOR & FLORAL

**Atelier Ashley Flowers**  
301.648.8181  
www.atelierashleyflowers.com

**Bee Inspired Events**  
202.340-5075  
www.beeinspiredevents.com

**Petal's Edge Floral Design**  
703.518.8488  
www.petalsedge.com

**Sweet Root Village**  
571.206.8016  
www.sweetrootvillage.com

## ENTERTAINMENT

**Bachelor Boys Band**  
517.775.2815  
www.bachelorboysband.com

**Bialek's Music**  
301.340.6206  
www.biakelsmusic.com

**Dan Goldman Events**  
202.215.3655  
www.dangoldmanevents.com

## EVENT PLANNING

**Bright Occasions**  
202.320.5600  
www.brightoccasions.com

**Jayne Heir**  
202.556.3679  
www.jayneheir.com

**Social Graces Weddings**  
www.socialgracesweddings.com

**SRS Events**  
631.827.3359  
www.srs.events

**Stunning Soirees**  
571.357.4489  
www.stunningsoireesco.com

## OFFICIANT SERVICES

**DC Elopements**  
800.721.8697  
www.dcelopements.com

## PHOTOGRAPHY

**Asico Photo**  
202.320.5600  
www.brightoccasions.com

**Janelle Jaqueline Photography**  
www.janellejaqueline.com

**Rhinehart Photography**  
717.830.6534  
www.rhinehartphotography.com

## TENTING

**Sugar Plum Tents**  
301.869.2054  
www.sugarplumtents.com

## VALET & PARKING

**MJ Valet**  
202.587.2745  
www.mjvalet.com

# Weddings & Social

15% military discount available  
Tent Rental Required for more than 60 guests  
Additional Rental Time: \$400/ Hour

## Celebration Package

Max 120 guests | 8 hour rental | All Event Spaces

High-Season: (April, May, June, September, October, November)

Saturdays: \$4,600 | Sunday – Fridays: \$3,800

Low-Season (January, February, March, July, August, December)

Saturdays: \$4,000 | Sunday – Fridays: \$3,200

## Micro-Wedding Package

Max 60 guests | 6 hour rental | Indoor OR Outdoor Spaces

Saturdays: \$2,800 | Sunday – Fridays: \$2,800

## Elopement Package

Max 20 guests | Access to All Event Spaces

Monday - Sunday: \$750 (\$250 per additional 1/2 hour)

15% non-profit discount available  
Tent Rental Required for more than 100 guests  
Additional Rental Time: \$400/ Hour

# Corporate Events

## Venue Rental

\$5,000 | Max 200 guests | 8 hour rental

Drawing Room, Dining Room, Terrace & Full Garden

Access to Library, Solarium, Historic Kitchen, Gallery, and Wine Cellar

## Indoor Package

\$3,200 | Max 80 guests | 6 hour rental

Drawing Room, Dining Room, and Terrace

Access to Library, Solarium, and Dugout

## Garden Package

\$3,200 | Max 150 guests | 6 hour rental

Upper Garden, Lower Garden, Terrace,

Access to Library, Solarium, and Dugout

## Dining Room & Drawing Room

\$1,200 | Max 60 guests | 4 hour rental

# Photo & Film Shoots

During Regular Business Hours: \$400 - 2 hours | \$800 - 5 hours | \$1,200 - 8 hours

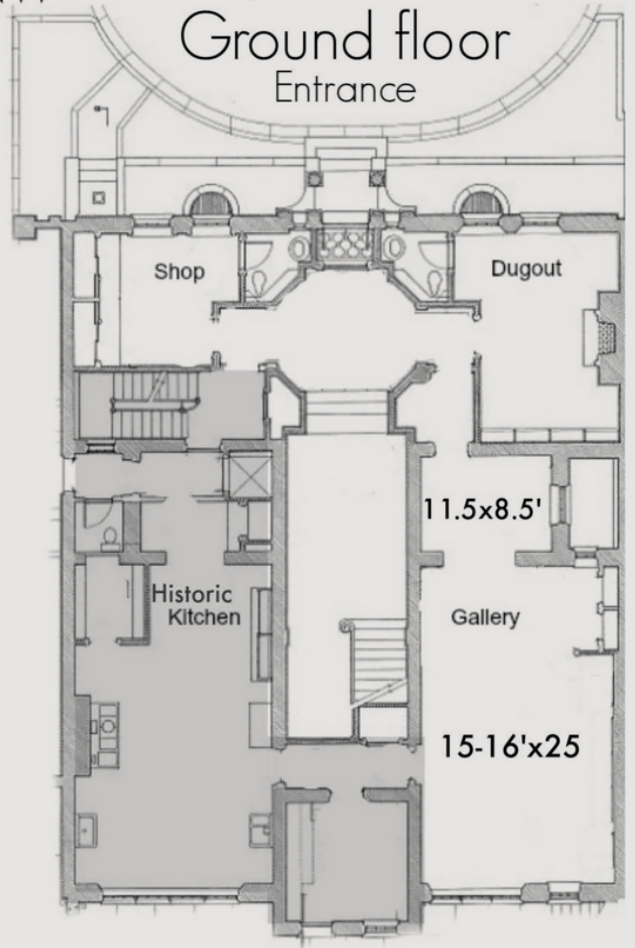
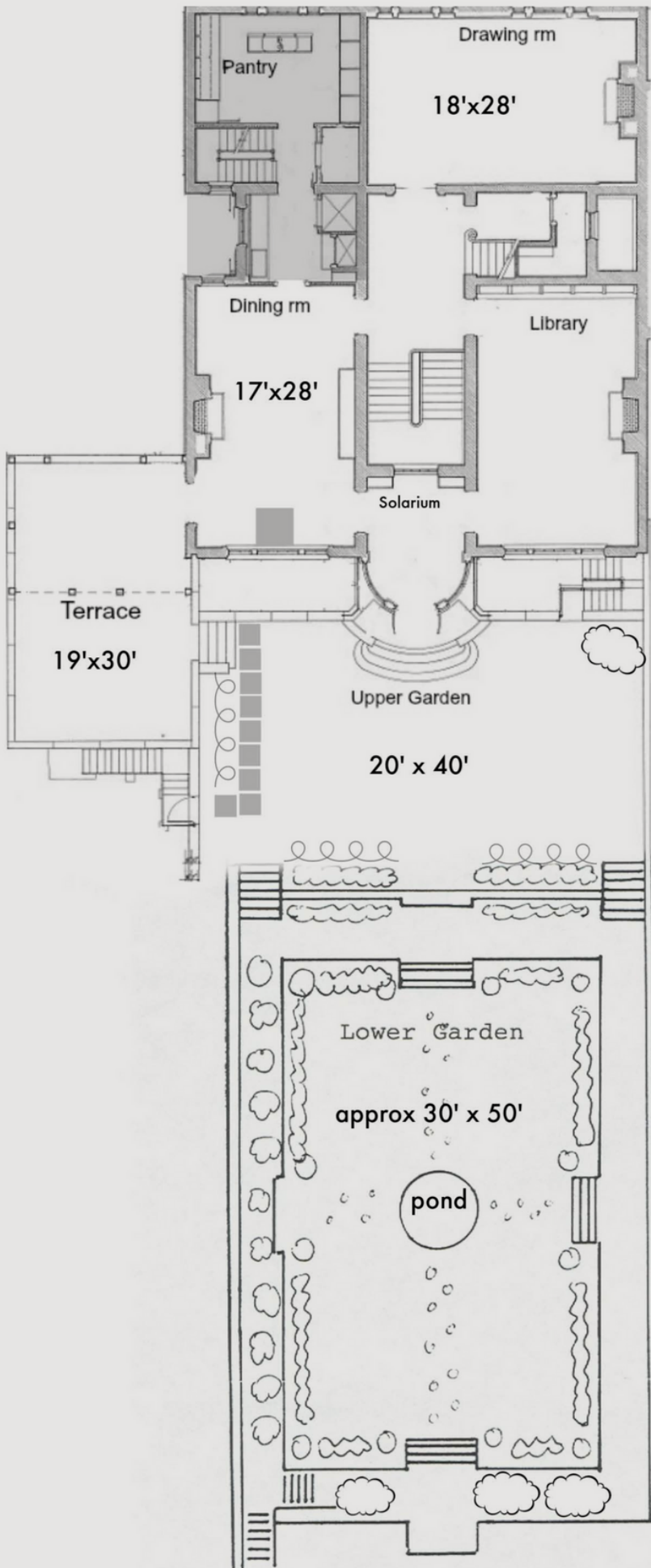
Outside Regular Business Hours: \$1,000 - 5 hours | \$1,600 - 8 hours

Choose Between Dugout, Historical Kitchen, Drawing Room, Dining Room, Library, Solarium



← S Street, NW →

## 2nd floor & Garden





## THE PRESIDENT WOODROW WILSON HOUSE

2340 S St NW, Washington, DC 20008  
202.792.5804

[events@woodrowwilsonhouse.org](mailto:events@woodrowwilsonhouse.org)  
[www.woodrowwilsonhouse.org](http://www.woodrowwilsonhouse.org)  
[@wilsonhouseevents](https://www.instagram.com/wilsonhouseevents)