



# **WOODROW WILSON HOUSE**

Fall 2022 Scholar Program

Madeleine Way

# ABOUT ME

- Junior at Luther College in Decorah, Iowa
- Major in political science, minors in museum studies and music
- Studying at the Lutheran College Washington Semester Program
- This is my first internship!



# MY GOALS

- Learn how to interact with museum guests
- Improve my research skills
- Work with historical objects
- Try different jobs in the museum

# DAY-TO-DAY WORK

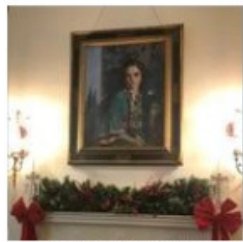
- Supervision of museum guests/visitors
- Research on ReDiscovery for projects and events
- Rearranging furniture and objects for events
- Folding fliers and brochures
- Winding the clock every few days



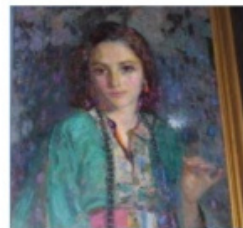


# SEMESTER PROJECT

## Woodrow Wilson House



L'Esperance (1917), Hovsep Pushman



The subject of the painting is the niece of Pushman, named Dora. She is wearing a traditional Armenian dress and holding a white flower, meant to symbolize hope. The painting was a gift to President Woodrow Wilson from Armenia and Syria, to express gratitude for President Wilson's help in Armenia.

### Hovsep Pushman (1877-1966)

Hovsep Pushman was born in Armenia on May 9, 1877. From a young age, Pushman showed great artistic potential. He received a scholarship to attend the Constantinople Academy of Art at age 11. He traveled to the United States at age 17 where he began teaching art in Chicago. After his teaching career, Pushman traveled to Paris to study at the Académie Julian under Lefebvre, Robert-Fleury, and Dechenaud. During his time in Paris, Pushman exhibited select works of art at the Salon des Artistes Français. He won a bronze medal in 1914 and a silver medal in 1921. Pushman moved to Riverside, California in 1918 where he resided until his later years. He established his studio in 1921 and founded the Laguna Beach Art Association with a group of other artists. He dedicated his career to still-life works during his time in California. His paintings were very symbolic and featured idols, pottery, and cloudy lighting. Pushman spent the last part of his life in New York City, where he worked with the Grand Central Art Galleries. He died on February 13, 1966. Today, his works are featured in museums and collections located all over the country.

#### Bibliography

"Hovsep Pushman." *Artnet.com*, Artnet Worldwide Corporation, <http://www.artnet.com/artists/hovsep-pushman/>.  
"Catalogue Raisonné." *Hovsep Pushman, Virtual Catalogue Raisonné*, <http://www.hovseppushman.net/bio.html>.

THE PRESIDENT WOODROW WILSON HOUSE - NATIONAL TRUST FOR HISTORIC PRESERVATION  
2340 "S" Street, NW, Washington, D.C. 20008 / T: 202.387.4062 / WilsonHouse@SavingPlaces.org

- Researched paintings with female subjects
- Used ReDiscovery to do research
- Researched the artist and significance of each painting to the Woodrow Wilson House
- Final product is a PDF of each information for the paintings

# CONCLUSION

- I gained a better understanding of how a museum is managed
- I learned how to conduct research on historical objects
- I learned how museum events are marketed to the public